



UNION BUILDMART PRIVATE LIMITED
(CIN - U70100HR2010PTC086524)

Registered Office:

41st Floor, Tower-1, M3M International Financial Center, Sector-66, Gurugram-122191. Haryana

Sales Gallery:

M3M Experia, Sector 113, Dwarka Expressway, Smart City Delhi Airport, Gurugram

CRM Lounge:

10th Floor, M3M Urbana Business Park, Tower A, Sector 67, Golf Course Road (Extn.), Gurugram 122101, Haryana, India

Project Site:

M3M Mansion, Sector-113, Gurugram, 122017, Haryana, India

Disclaimer: The information contained in this Brochure ("Brochure"), is merely informative and unless otherwise expressly provided, all contents are for general information purposes. Nothing contained herein intends to constitute a legal offer / invitation to offer or sale. The reader hereby accepts and agrees to be bound by and comply with these legal terms of use. This Brochure contains proprietary information, exclusive to the Promoter Company. The contents, and any information or opinion on the project, if any, may not be reproduced, transmitted (by any means), modified, sold, circulated, shared or otherwise provided, in whole or in part, to any other person or entity, nor can it be store, archive or in any other way put to use or used for any public or commercial purpose without the Promoter's explicit consent. Promoter reserves its right to revoke any such consent, without prior notice. Any unauthorized review, use, disclosure, dissemination, forwarding, printing or copying of any page, information of the Brochure or any action taken upon reliance on such information is strictly prohibited and may be unlawful and the Promoter reserves its rights both in law and equity to take appropriate action in this regard. The information and contents herein, including all designs, layouts, specifications, plans, dimensions, measurements, areas, figures, locations, services, landscape, facilities, amenities & infrastructure etc. are merely indicative, illustrative, and not to scale and are indicative of the envisaged developments; and subject to revision by the Promoter as may be required and approved by the Competent Authorities. The units mentioned herein are subject to availability. Recipients/viewers are advised to exercise their discretion in relying on the information shown/provided and are requested to verify all the details, including area, amenities, services, terms of sales and payments and other relevant terms independently with the Promoter Company, have understanding of the same and take appropriate independent advice prior to concluding any decision for buying any Apartment(s) in the Project. "M3M Mansion" Phase-1 is a Group Housing Project under Transit Oriented Development Policy (TOD Policy) on land admeasuring 8.7 Acres/ 3.524 Hectares out of the Licensed Land admeasuring 10.225 Acres / 4.13 Hectares situated at Village Chauma, Sector - 113 Gurugram Manesar Urban Complex District Gurugram (Haryana). DTCP has granted License No. 229 of 2023 dated 02.11.2023 in favour of M/s Union Buildmart Private Limited alongwith other land-owners namely M/s Vibrant Infratech Pvt. Ltd and M/s Targe Buildcon Pvt. Ltd. (other Land Owners) for development of land admeasuring 4.13 Hectares/ 10.225 Acres. The project is being developed by Union Buildmart Private Limited along with other Land Owners. The Project is duly registered with Haryana Real Estate Regulatory Authority vide H-RERA Registration No. RC/REP/HARERA/GGM/802/534/2024/29 dated 18.03.2024. Copies of approvals are available for inspection at Promoter Company corporate office. The use of word 'M3M' shall in no manner be construed or interpreted as M3M India Pvt. Ltd. being the Promoter and / or Developer. Dispute with regard to the interpretation of information will be subject to the exclusive jurisdiction of District Courts at Gurugram, Haryana and Hon'ble High Court of Punjab & Haryana at Chandigarh, India.

RC/REP/HARERA/GGM/802/534/2024/29, DATED: 18.03.2024
PROMOTER NAME: UNION BUILDMART PVT. LTD
WWW.HARYANARERA.GOV.IN



M3M MANSION

AT **SCDA** SMART CITY DELHI AIRPORT

L I V E L A R G E
AT THE HEART OF DELHI NCR'S FUTURE!

THE **CENTRE** IS SHIFTING

A NEW **WORLD** IS EMERGING

NEW OPPORTUNITIES
ARE UNFOLDING

A NEW EPICENTRE IS CHANGING THE MAP OF DELHI

Dwarka Expressway is India's first elevated urban expressway and forms the capital's new spine! Landmark projects around the point where it connects Delhi and Gurgaon are changing the map of the capital. Supported by the vision and execution might of the Government, this region's next level infrastructure makes it the 'New Singapore'.

SCDA spans across approx. 1012 Sq. Mt. (101.7 hectares)

Sectors 111, 113 and 114 on Dwarka Expressway



THE MAP OF DELHI NCR IS CHANGING, AND SCDA IS AT THE HEART OF THIS TRANSFORMATION



MAP NOT TO SCALE

Map not to scale.

THE NEW EPICENTRE
OF DELHI NCR



IT BRINGS DELHI,
GURGAON AND THE

WORLD

WITHIN
EASY REACH!

IT IS FEW MINUTES

AWAY FROM INDIA'S
BUSIEST AIRPORT –
IGI AIRPORT

IT IS ON DWARKA EXPRESSWAY

Reference Image



SMART CITY DELHI AIRPORT

THE NEW URBAN VISION OF TOMORROW

M3M's visionary planning, extraordinary design and meticulous execution are creating an exceptional eco-system. SCDA's futuristic neoscape will delight your family for generations, and stand as a shining landmark for the vibrant and dynamic New India.



scda
**SMART CITY
DELHI AIRPORT**

A DESTINATION
IN THE MAKING.....

Smart City Delhi Airport is setting the benchmark for urban developments. It's thoughtful master planning enhances quality of life, promotes sustainability and improves efficiency. Abounding with well planned green spaces, inviting walking pathways, advanced technological systems, care for safety and security, it infuses a sense of wellness, joy and meaningful social interactions. Add to it an array of recreation and leisure facilities, offices and retail, SCDA has all it takes to make it "The Destination".

scda

SMART CITY DELHI AIRPORT

BUILT ON STRONG VALUES, SHAPED BY RIGOROUS RESEARCH

M3M mapped the blueprint of SCDA after rigorously studying the 12 acclaimed international urban developments.

5 global architectural firms have developed the master planning concepts of this city.

Every element here expresses its five core values: Iconic, Vibrant, Sustainable, Smart Life and Connected.



ICONIC:

A landmark of visionary planning

- Meticulously planned and impeccably executed mixed land use project
- Design and construction of each development here is a class defining landmark
- A complete eco-system where aspirational lifestyles will flourish



VIBRANT:

Where every moment is full of life

- Lively community spaces
- Catalysing a new culture of work, play and relax at the same place
- Enable quality recreation options



SUSTAINABLE:

Life in perfect harmony with earth

- Naturally shaded landscape and sprawling greens encourage walkability
- Biodiversity conservation with use of native vegetation
- Lifecycle thinking of resources from usage to disposal
- Technology to conserve natural resources



SMART LIFE

Enabling futuristic lifestyles

- Efficient apartment designs maximize usable space
- Bio sensing and RFID enabled systems strengthen security
- Future ready, broad internal roads
- Technology enabled conveniences

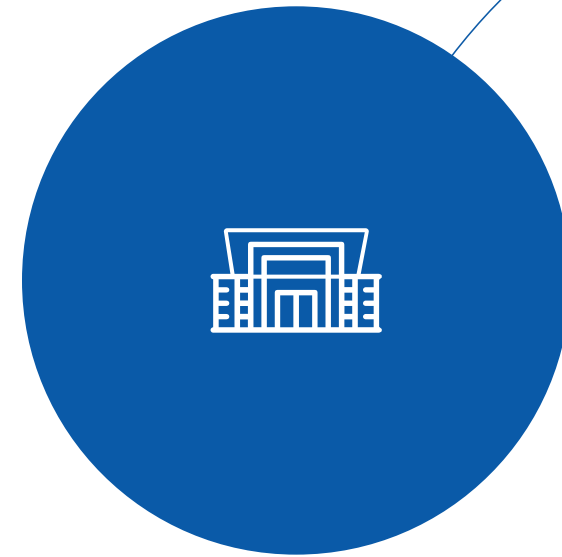


CONNECTED

Seamless links to wherever you wish to be

- The airport is minutes away
- SCDA is on Dwarka Expressway, so all the landmarks of Delhi and Gurgaon are within easy reach
- Enjoy exceptional metro connectivity for effortless travel and convenient commuting

MAJOR LANDMARKS ARE EMERGING AROUND

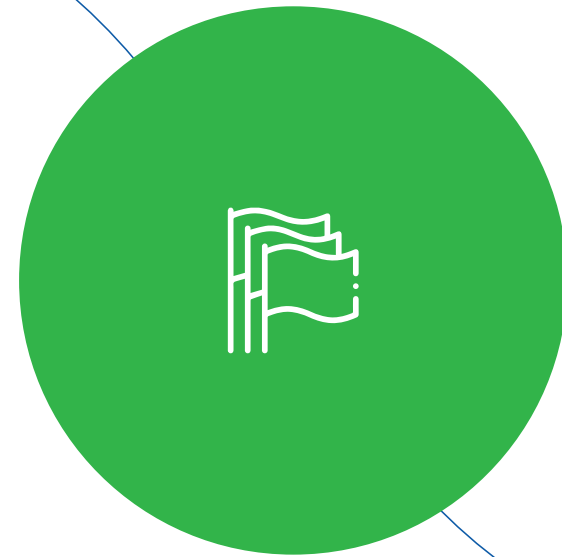


YASHOBHOOMI

(INDIA INTERNATIONAL CONVENTION CENTRE)

One of the world's largest convention hubs. A calendar full of global business and geopolitical events that will elevate the profile of the region.

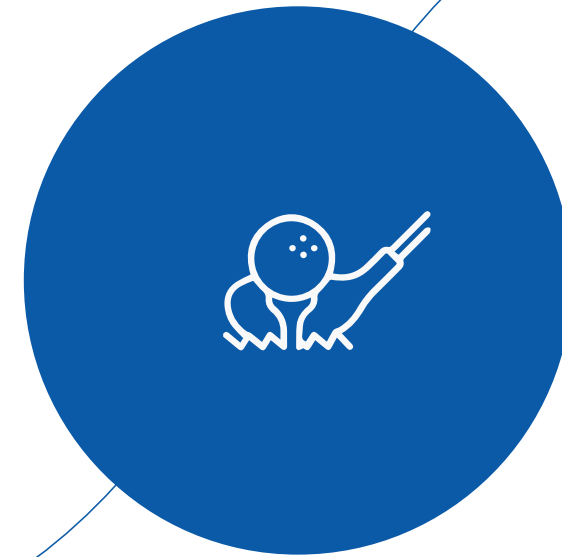
5 minutes* from SCDA



DIPLOMATIC ENCLAVE II

Home to 37 embassies, diplomatic residences and international organisations. This will make it a high priority, highly secured location.

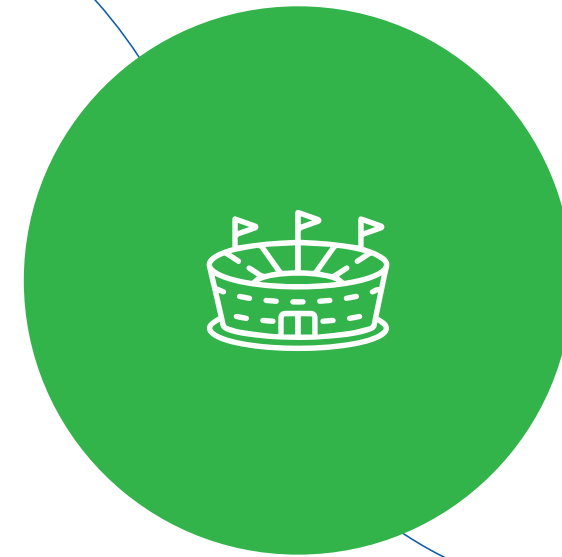
7 minutes* from SCDA



DWARKA GOLF CLUB

India's longest golf course is set to attract enthusiasts, and will host top flight players and tournaments.

15 minutes* from SCDA



INTERNATIONAL SPORTS HUB

Galvanizes the region's sporting spirit with world class cricket, football and numerous other indoor sports and training facilities. A new venue for international sporting events.

15 minutes* from SCDA



BHARAT VANDANA PARK

Bharat Vandana Park will be an international tourist attraction. It represents India's rich heritage, and nature at its glorious best. It is replete with large water bodies, islands, restaurants and adventure activities.

15 minutes* from SCDA



AEROCITY

A global business and lifestyle hub offers an array of business, luxury retail, entertainment, fine dining, nightlife and cultural options.

7 minutes* from SCDA

*Approx. time travel

PHASED
PROGRESSION OF

SCDA SMART CITY DELHI AIRPORT



M3M
113
MARKET
PREMIUM SCOs

GGM/365/97/2019/59 DATED- 15.10.2019



M3M
CAPITAL
GOLF STYLE LIVING

HIGH END GOLF STYLE
LIVING

PHASE 1 - RC/REP/HARERA/GGM/531/263/2022/06 DATED. 02.02.2022
PHASE 2 - RC/REP/HARERA/GGM/612/344/2022/87 DATED. 28.09.2022



M3M
CAPITALWALK

THE 1 KM LONG
RETAIL

RC/REP/HARERA/GGM/531/263/2022/06, dated 02.02.2022
PROMOTER NAME: UNION BUILD MART PRIVATE LIMITED
WWW.HARYANARERA.GOV.IN



M3M
CROWN

LUXURY LIFESTYLE
RESIDENCES.

C/REP/HARERA/ GGM/687/419/2023/31 DATED 02.02.2023
PROMOTER NAME: METRO EDUCATION & WELFARE PRIVATE LIMITED
WWW.HARYANARERA.GOV.IN

NOW, **M&M** INVITES YOU TO

THE NEXT **BIG**
OPPORTUNITY
AT SCDA.....



A woman with long dark hair, wearing a dark blue, ribbed, sleeveless dress and large earrings, stands at a bar. She is holding a glass of red wine. The background is a blurred city skyline at night, with lights from buildings and streetlights. The overall mood is sophisticated and elegant.

AN ADDRESS
THAT EXPRESSES
IMMENSE POTENTIAL

A LIFESTYLE THAT
OPENS UP **INFINITE**
POSSIBILITIES...

PRESENTING **M3M**
MANSSION

FOR A LIFE AS **LARGE** AS YOUR
DREAMS

Artistic Impression

An artistic rendering of a modern high-rise residential complex. The image shows several tall, grey apartment buildings with gold-colored accents and balconies. In the foreground, there is a lush green garden with palm trees, a winding path, and a large, curved swimming pool with clear blue water. People are seen walking on the path and sitting on lounge chairs near the pool. The scene is set during the day with a bright sky and a sun flare effect in the background.

RISE ABOVE THE ORDINARY

Soar high into the realm of unparalleled indulgence. Make space for your growing aspirations amidst the awe-inspiring towers of M3M Mansion.

An artistic rendering of a golf course. In the foreground, a golfer in a blue shirt and white shorts is captured in the middle of a putt on a lush green fairway. A white flag on a black pole stands near the hole. The background features several tall, modern high-rise apartment buildings with white facades and gold-colored accents around the balconies. The scene is framed by dense green foliage and trees, with sunlight filtering through the leaves on the right side, creating a warm, golden glow.

SAVOUR THE GOLF LIFESTYLE

Chip and Putt Experience

Uninterrupted View of Vast Golfing Greens

Artistic Impression

WHERE EVERY ARRIVAL FEELS EXCEPTIONAL

Step in to a different world, secure in the assurance of a safe environment. The entrance plaza will fill up your senses with the sheer bliss of belonging. Every time you step out, you'll count the minutes till you come back!

Access Controlled System

Exclusive Entry and Exit

Wide Entrance Plaza



Artistic Impression



Reference image

WHERE EVERY HOMECOMING IS A CELEBRATION

The drop off point rewards your anticipation with its design and detail focussed on convenience and style. Fringed with landscaping elements and positioned on the outer periphery, it smartly limits traffic circulation from the pedestrian parts of the development making it absolutely safe for all residents.

Wide drive through

Surface Parking for Visitors

Staff for Assistance

STEP INTO THE MAGNIFICENCE OF YOUR GRAND LOBBY

Inside, grandeur follows you across the lavishly appointed lobby. An experience elevated by M3M's signature of opulent aesthetics and quality craftsmanship. This is yours to enjoy, every day!

Double-Height Lobby

Multiple Sit-outs

Opens both into the drop off point
and Central Greens





ALL THE SPACE, AT THE RIGHT PLACE

The super luxurious residences of M3M Mansion offer super sumptuous rooms, so you're never stretched for comfort and every member of your family feels special.

VRV Air-conditioning

Wooden Flooring in the Bedroom



Master Bathroom

A HOME FULL OF LIFE

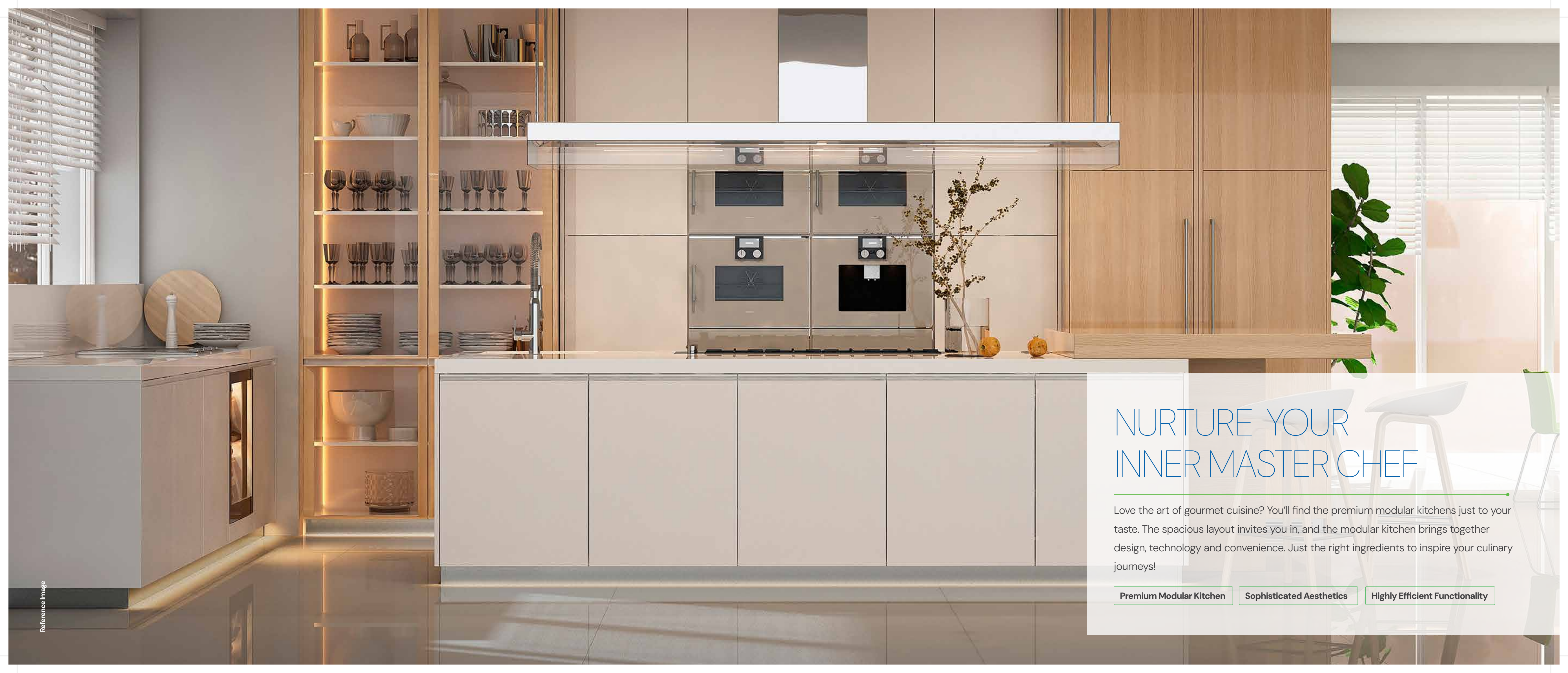
Your home at M3M Mansion will never be short on space with its large format apartments. The tall windows will fill your living area with natural light and air, creating an inviting space for your family and guests.

195 Sq. Mtr. (2100 Sq. Ft.) to 650 Sq. Mtr. (7000 Sq. Ft)

3.5, 4.5 and 5 Bed Apartments & Penthouses

Extra House Help Room





Reference Image

NURTURE YOUR INNER MASTER CHEF

Love the art of gourmet cuisine? You'll find the premium modular kitchens just to your taste. The spacious layout invites you in, and the modular kitchen brings together design, technology and convenience. Just the right ingredients to inspire your culinary journeys!

Premium Modular Kitchen

Sophisticated Aesthetics

Highly Efficient Functionality

GET FLOORED BY GLOBAL FLAIR

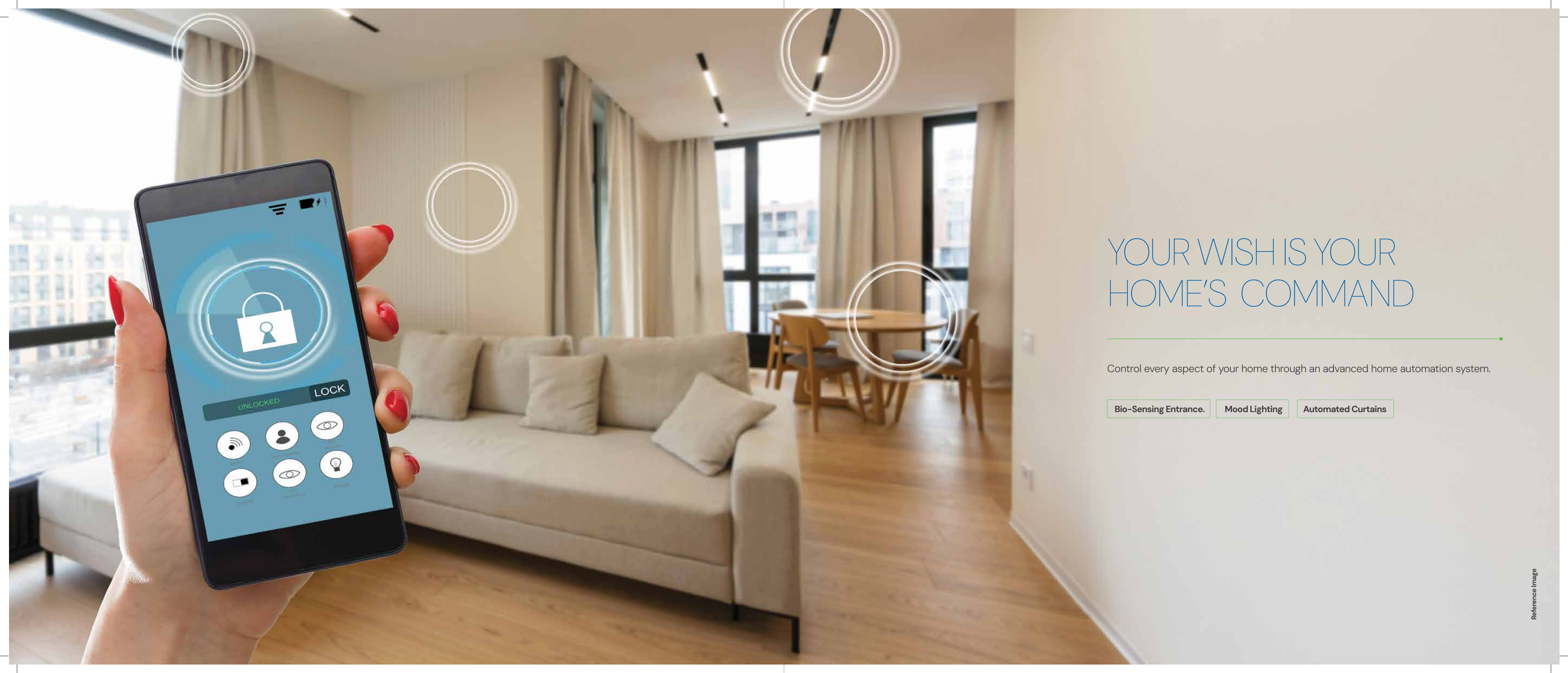
Crafted by masters to transform floors into works of art! See the natural light glide along the highly lustrous surface. When you have the world's finest at your feet, it's natural to feel on top of the world!

Top End Imported Marble

High Lustre

Rich Texture





YOUR WISH IS YOUR HOME'S COMMAND

Control every aspect of your home through an advanced home automation system.

- Bio-Sensing Entrance.
- Mood Lighting
- Automated Curtains



Reference Image

REIMAGINE THE GREAT OUTDOORS WITH YOUR OWN PRIVATE DECK

Awaken your inner artist, gardener or dancer. Let your children's imagination run free. M3M Mansion deck spaces open a world of possibilities

WRAP-AROUND OPULENCE

Extended spaces at select M3M Mansion apartments bring the outdoors and the indoors into a seamless whole. Your home is at one with its habitat – refreshed by views of serene greens and energized by the futuristic urban neoscape skyline of SCDA.





A 'NATURAL' SETTING FOR YOUR LIFE

At M3M Mansion, landscape design is conceived, designed and executed as meticulously as the residences. Every element of the outdoors is designed to enhance life.

We have selected native tree species to create a flourishing natural habitat. A diversity of canopies, a variety of heights and a range of foliage come together to build a truly nourishing green space.

WHERE GOLF IS A WAY OF LIFE

M3M Mansion invites you to immerse yourself in the world of golf and the power and prestige it brings. An uninterrupted view of seamless golfing greens greets you at every window. Feast your eyes on the extended 18-hole chip and putt course. Savour the golfing lifestyle, every single day!





Artistic Impression

FIVE ELEMENTS IN POETIC HARMONY: ELEVATE YOUR SOUL

At the heart of M3M Mansion, light, shadow, wind, greenery and water come together to create a natural wonderland. Water features flow serenely alongside leafy lanes, encouraging you to marvel at the wonders of nature in every season!

BUILDING THE COMMUNITY SPIRIT NATURALLY

The harmonious combination of hardscape and softscape elements at M3M Mansion is designed to enhance meaningful interactions between the entire community.

Amphitheatre

Stilt Sit Outs

Walking Pathways





A MAGNUM OPUS CLUB EXPERIENCE

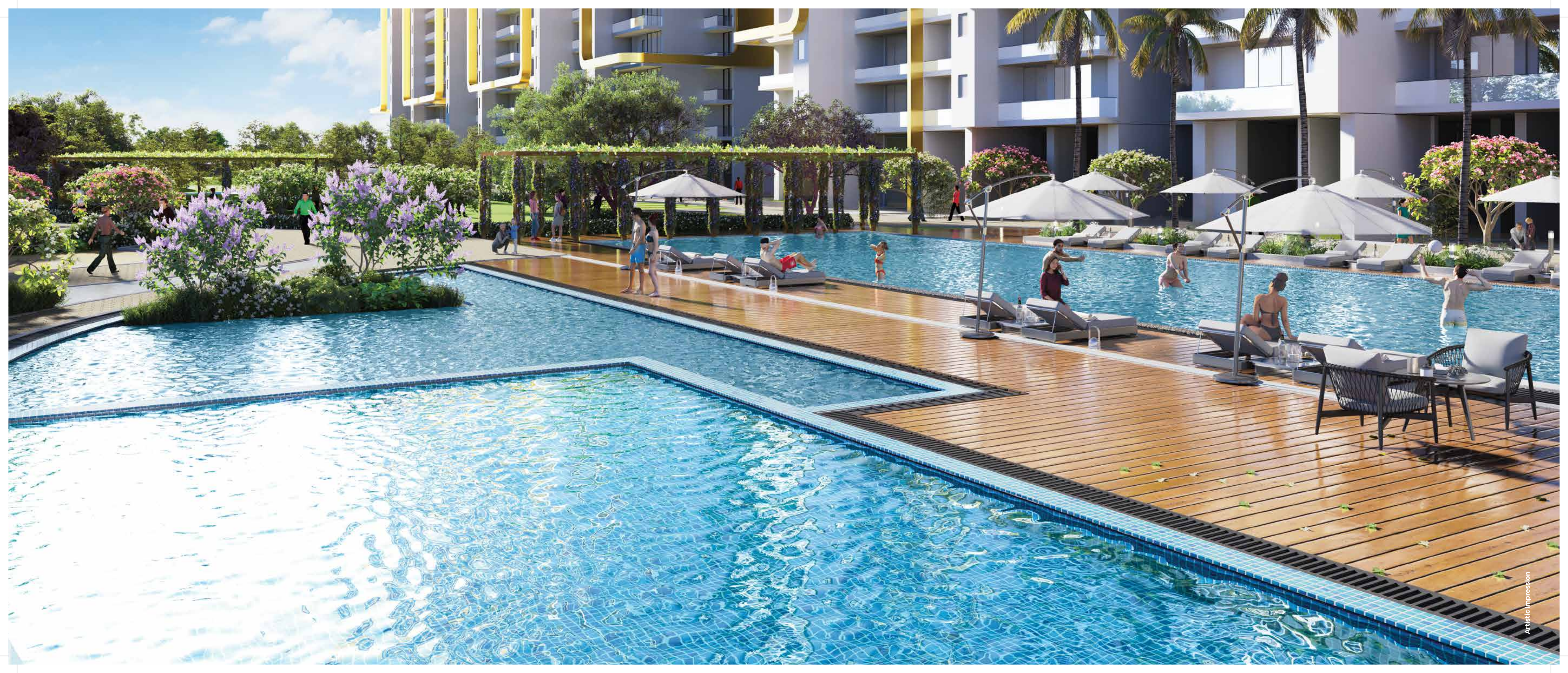
A world of high quality leisure, recreation and entertainment options to ensure a richer, fuller life for all members of your family. Colossal club spaces, state-of-the-art facilities, abundant options for fitness, wellness, recreation and socializing open up a world of boundless delight for every member of your family.



LEISURE IS NOW A REAL PLEASURE

A magnificent monument to recreation. Replete with a multitude of sports, fitness, wellness, dining and entertainment options to regale you, your family and your guests. So you have a wealth of choices to create magical moments.

Club
Imperial





THE ULTIMATE SWIM EXPERIENCE — ALL YEAR LONG

Create waves at our lavish swimming pool, with a separate splash pool for children. Or soak in luxury at our terrace pool. Enjoy total comfort in any season, thanks to the advanced temperature control system.

Temperature Control Pool

Outdoor Adult & Kids Pool



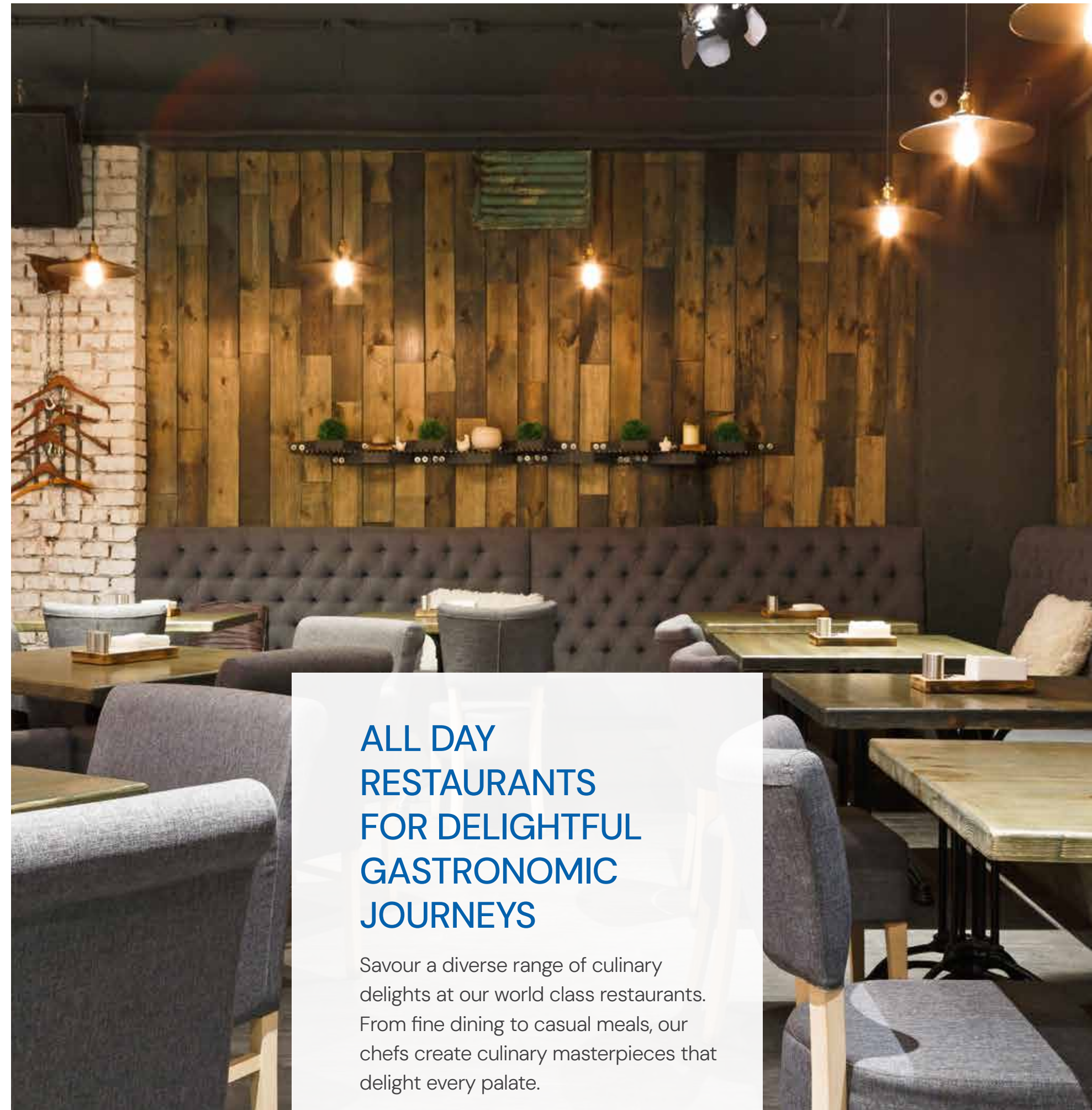
Reference Image

VERSATILE BANQUET HALLS

Large weddings to intimate anniversaries, family get-togethers to corporate events, our customizable banquet halls provide impeccable service and stunning settings.

EXCEPTIONAL EVENTS, EXTRAORDINARY MOMENTS

Catalyse magical experiences. Create moments that you will treasure for a lifetime.



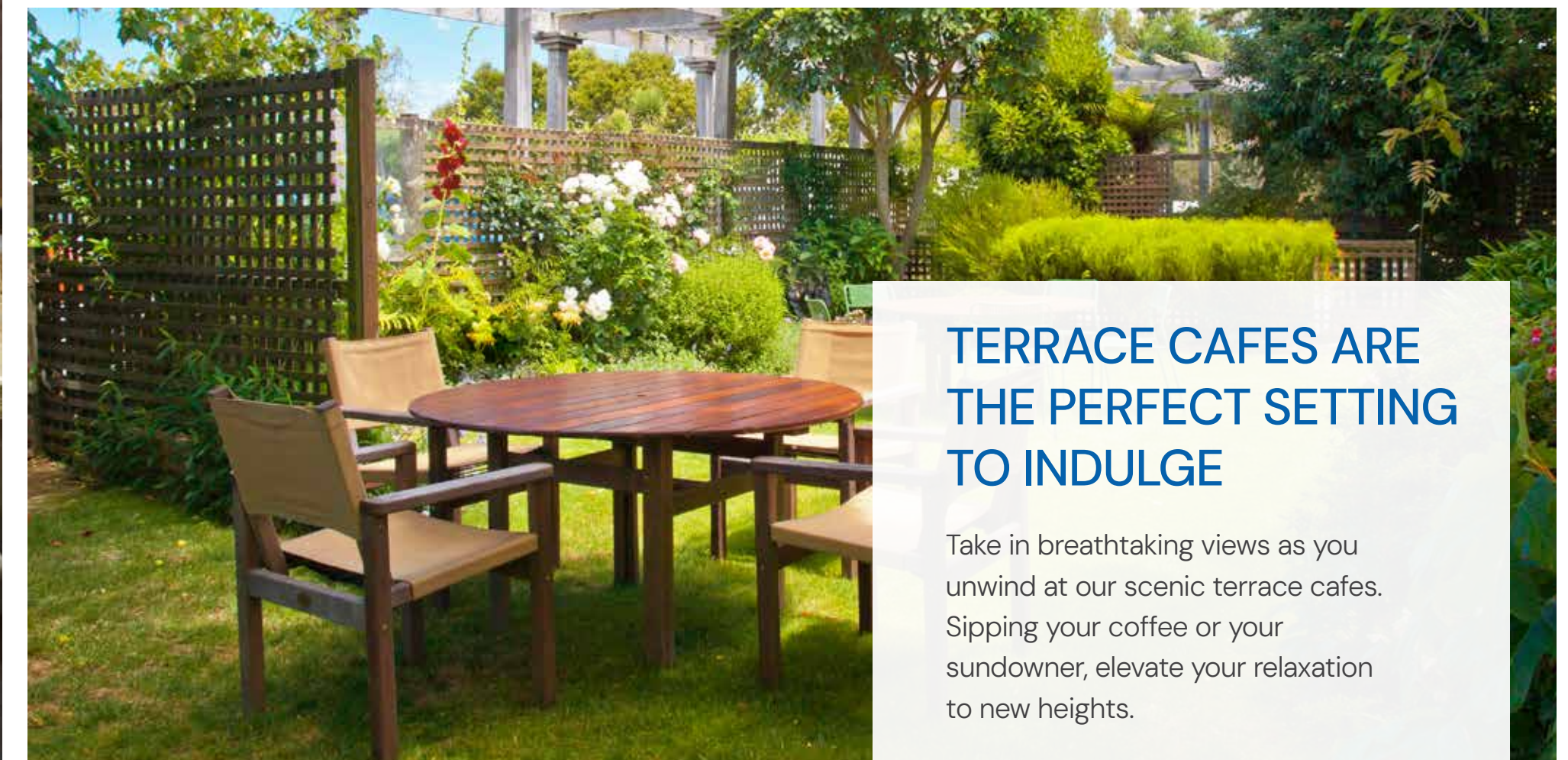
ALL DAY RESTAURANTS FOR DELIGHTFUL GASTRONOMIC JOURNEYS

Savour a diverse range of culinary delights at our world class restaurants. From fine dining to casual meals, our chefs create culinary masterpieces that delight every palate.



AL FRESCO EXPERIENCES UNDER THE OPEN SKIES!

Sizzling hot barbeque parties, family get together in the sun, delectable meals, surrounded by refreshing greens... Our outdoor spaces are up for anything you have in mind!



TERRACE CAFES ARE THE PERFECT SETTING TO INDULGE

Take in breathtaking views as you unwind at our scenic terrace cafes. Sipping your coffee or your sundowner, elevate your relaxation to new heights.

NEVER A DULL MOMENT

At M3M Mansion, every member and every generation in your family has access to a richer, fuller life.



STATE-OF-THE-ART GAMING ZONE

Ready for a riveting experience? The latest consoles and gaming equipment transport you to a different world.



SALON

Pamper yourself with indulgent treatments by skilled professionals at the exquisite salon. Emerge refreshed and revitalized.



ART DECK

Lose yourself in the world of colours, forms, shapes and textures. Find your own signature style at the Art Deck as you let your imagination explore new frontiers.



BOWLING ALLEY

State-of-the-art facilities, tasty snacks and a lively atmosphere, make this the perfect outing for your family!



MUSIC STUDIO

A dedicated space for accomplished artists and eager enthusiasts. From private lessons to lively jam sessions, unleash your musical talent with state of the art equipment.

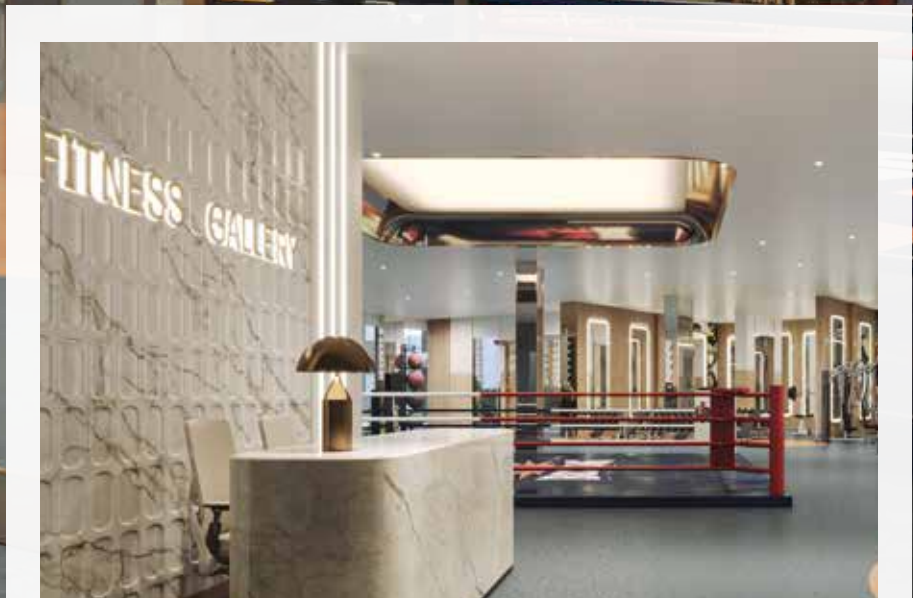


CIGAR LOUNGE

A space as refined as your taste. Experience the world's finest cigars in a space dedicated to sheer indulgence.



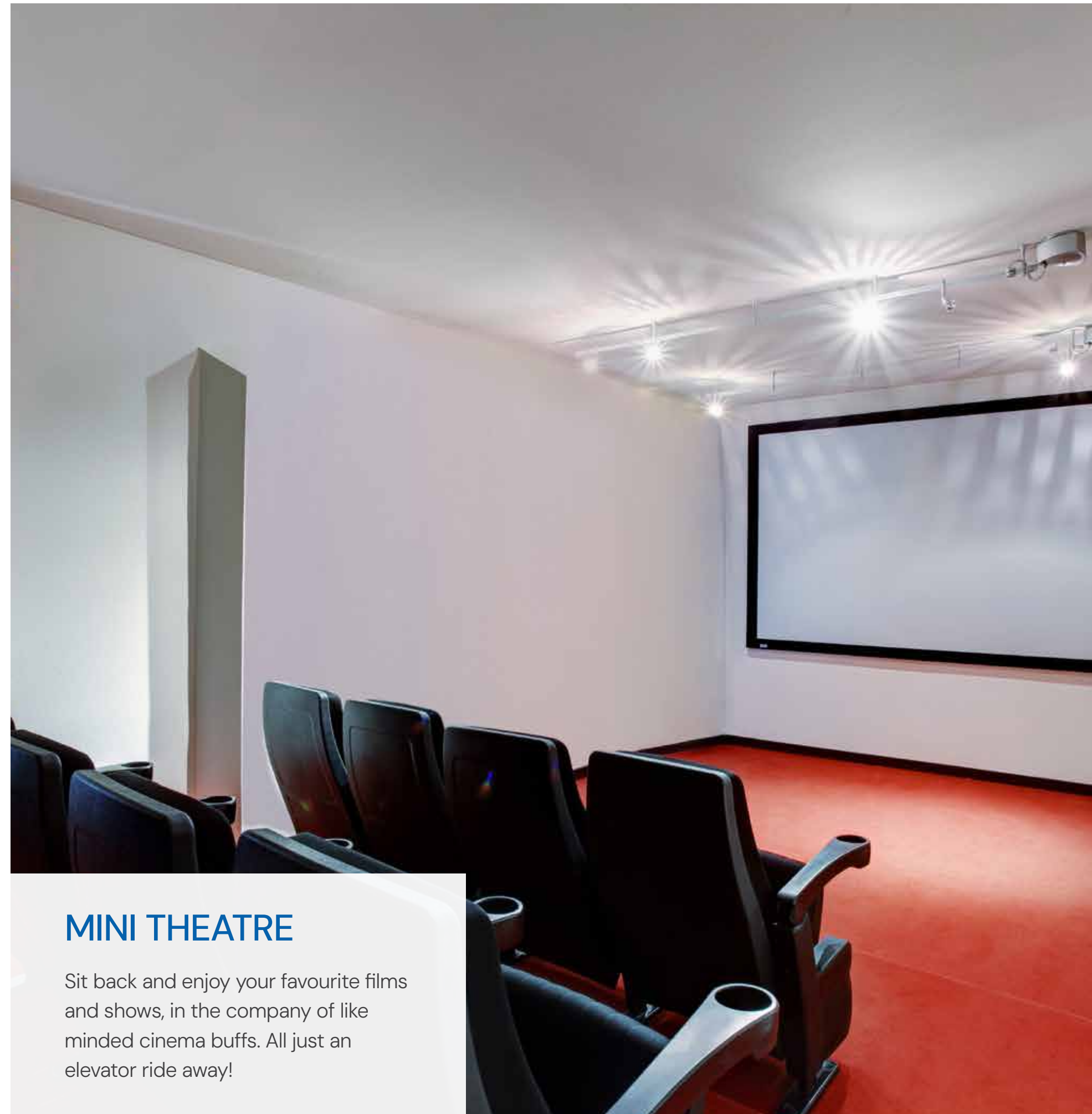
Artistic Impression



EXERCISE YOUR RIGHT TO CHOOSE!

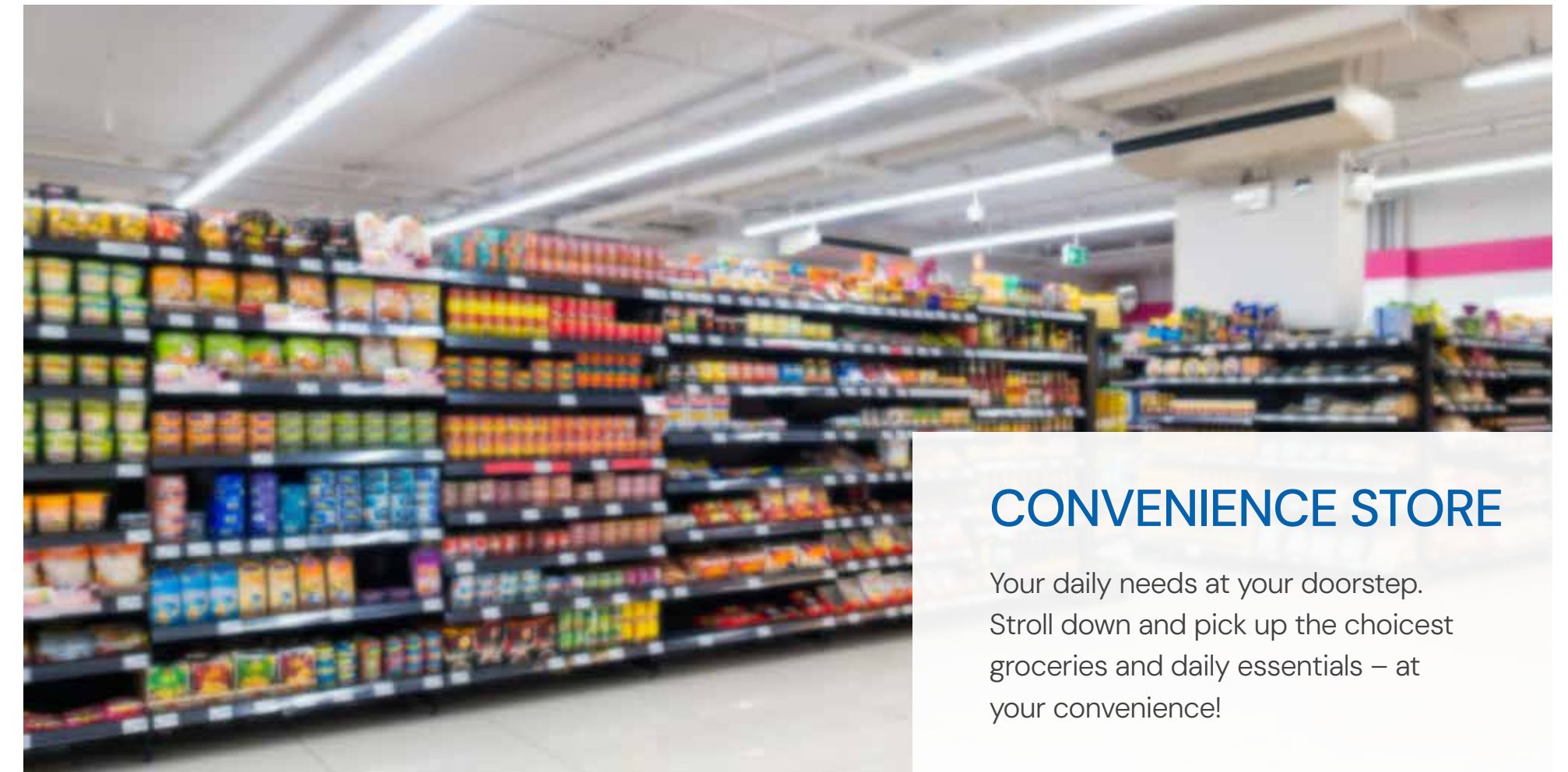
M3M Mansion offers you a choice of two fully equipped state of the art gyms to work out. No waiting, no hurrying – train at your space, your pace!

AMENITIES THAT MAKE YOUR HEART SING



MINI THEATRE

Sit back and enjoy your favourite films and shows, in the company of like minded cinema buffs. All just an elevator ride away!



CONVENIENCE STORE

Your daily needs at your doorstep. Stroll down and pick up the choicest groceries and daily essentials – at your convenience!



PET PARK

We know pets are part of your family. At M3M Mansion, they get their own space to socialize, play and unwind. A healthy pet, after all, makes a happy family!

WHERE
STAYING ACTIVE
IS STAYING ALIVE



YOGA ZONE



SPA



SAUNA

SPORTS, A WAY OF LIFE



BASKETBALL COURT

JOGGING TRACK



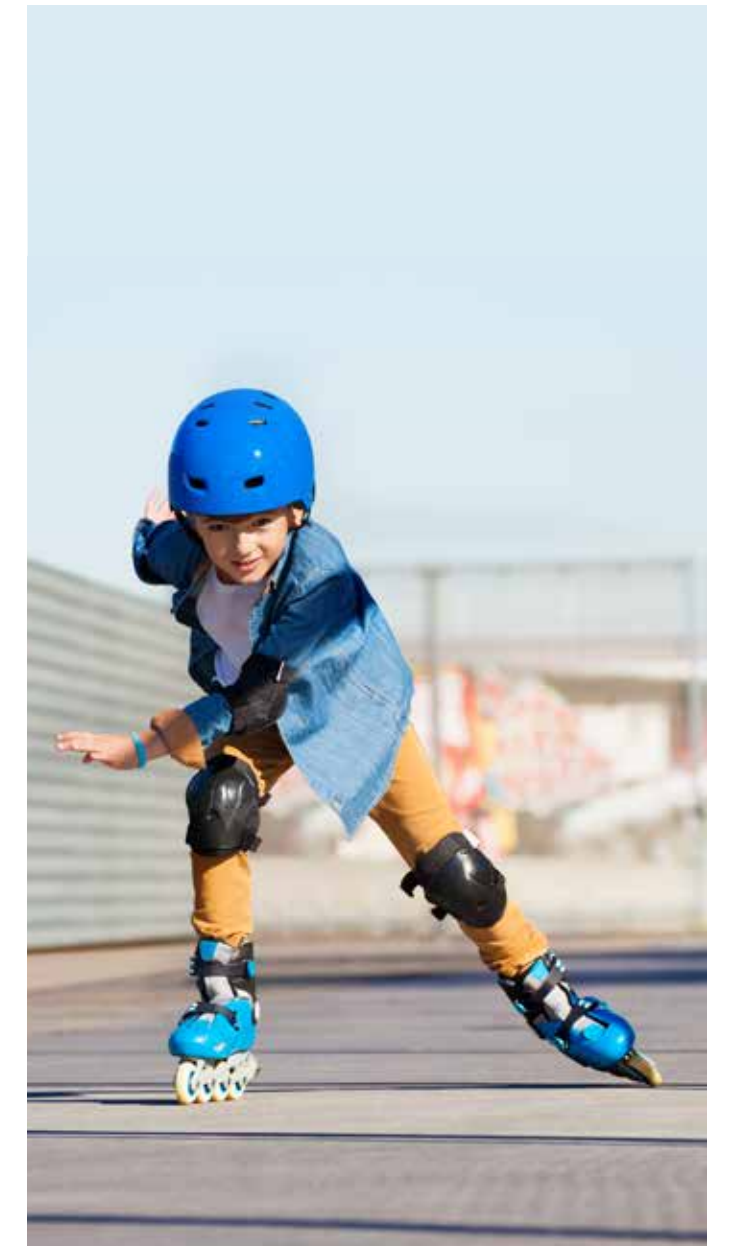
GOLF COURSE

CRICKET BOX



SQUASH

WALL CLIMBING



SKATING RINK



WHERE BODY, MIND AND SOUL ARE IN COMPLETE HARMONY

Your holistic wellbeing is at the heart of the M3M Mansion design concept. A temple in the premises makes your daily worship more fulfilling.

A meditation zone encourages deep contemplation.

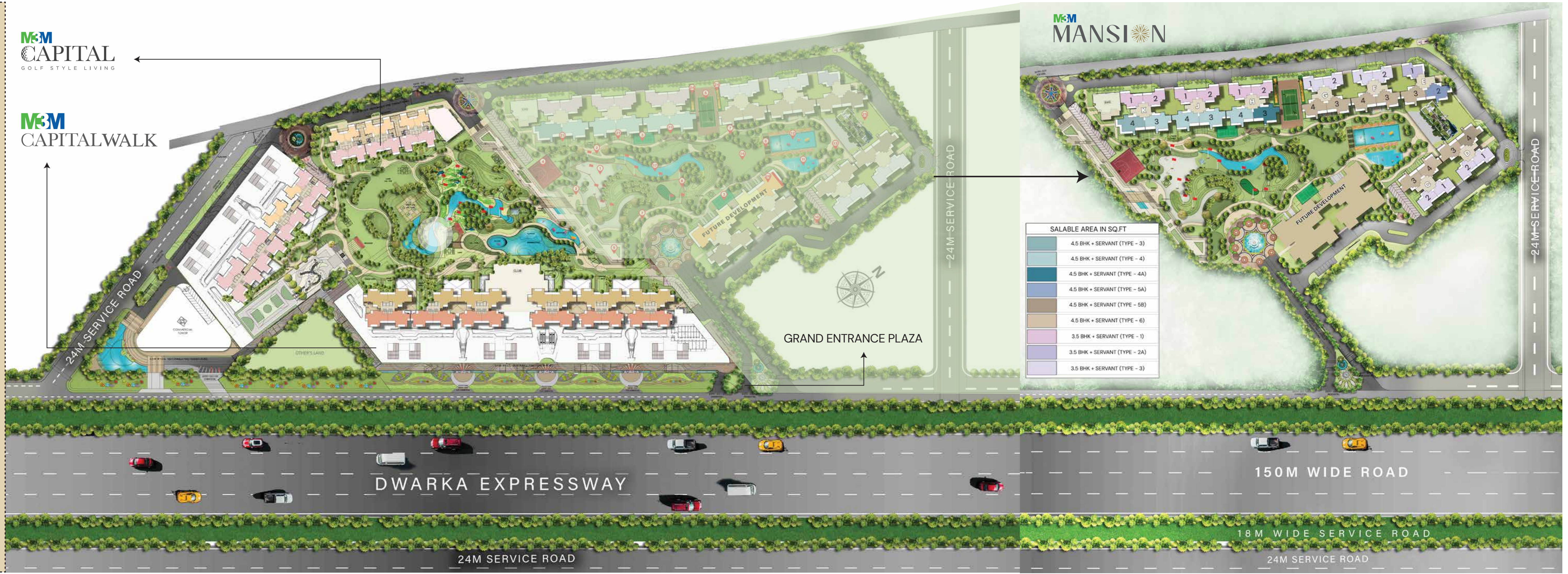
Calming Meditation Zones

Community Temple



- 1) GOLF PUTTING AREA
- 2) SAND PITS
- 3) BADMINTON COURT
- 4) HALF BASKETBALL COURT
- 5) LAWN TENNIS COURT
- 6) BICYCLE STAND
- 7) WALKING/ JOGGING TRACKS
- 8) GAZEBO/CABANAS SEATING
- 9) OUTDOOR YOGA AREA
- 10) TEMPLE
- 11) KIDS POOL
- 12) HALF OLYMPIC POOL
- 13) LOOK OUT DECKS
- 14) OUTDOOR PARTY LAWN
- 15) PHYSIO ROOM
- 16) OUTDOOR GYM & FITNESS AREAS
- 17) MINIATURE LAGOONS
- 18) KIDS PLAY AREA
- 19) OPEN BARBEQUE
- 20) PETS PARKS
- 21) ORGANIC FARMING AREA
- 22) CONVINIENT SHOPPING
- 23) OAT
- 24) CRICKET NET
- 25) CLUBS
- 26) ROCK CLIMBING (GF)

*Map not to scale.



SITE PLAN